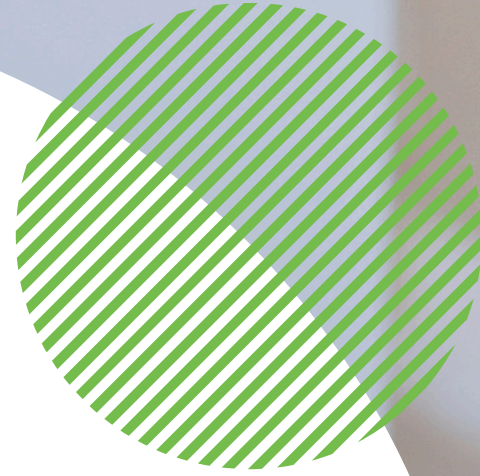




**PROSPERA**  
WHERE BELONGING BEGINS





# Our Purpose

To **create** a home where  
**everyone finds** their place of  
**belonging**



# Our Values

## Trust

Trust at Prospera means acting with integrity and reliability so everyone feels safe, supported, and confident in our care.

## Resilience

Resilience at Prospera means staying strong, adaptable, and solution-focused to support children and each other through challenges.

## Nurture

Nurture at Prospera means providing consistent care, guidance, and emotional support so every one feels valued and able to thrive.

## Development

Development at Prospera means continually growing our skills and practice to support each child's progress and our own potential.



# Trust - Everyday Behaviours

## **Collaborate Well**

Support and rely on each other

## **Empower Judgement**

Empower responsible decisions

## **Know Individuals Deeply**

Understand staff and child's needs deeply

## **Meaningful Relationships**

Connect with consistency and meaningfully

## **Communicate with Clarity**

Be open and clear with everyone



# Development - Everyday Behaviours

## Positive Routines

Create habits that support growth

## Reflective Awareness

Understand strengths and areas to develop

## Supportive Challenge

Give and receive constructive challenge

## Openness to Learning

Remain open to learning, always

## Inner Drive

Take ownership of progress and motivation



# Nurture - Everyday Behaviours

## **Bespoke Approach**

Respond to individual needs for everyone

## **Champion Inclusion**

Ensure everyone feels they belong

## **Celbrating Small Wins**

Recognise progress every day

## **Professional Boundaries**

Provide safety through clarity & personal boundaries

## **Professional Courage**

Do what's right, even when difficult



# Resilience - Everyday Behaviours

## **Stay Steady**

Remain calm and reliable in all situations

## **Stay Fair**

Respond without judgement to everyone

## **Stay Consistent**

Make balanced, stable decisions

## **Face Challenges Positively**

Address conflict with solutions

## **Stronger Together**

Prioritise the team; we not me